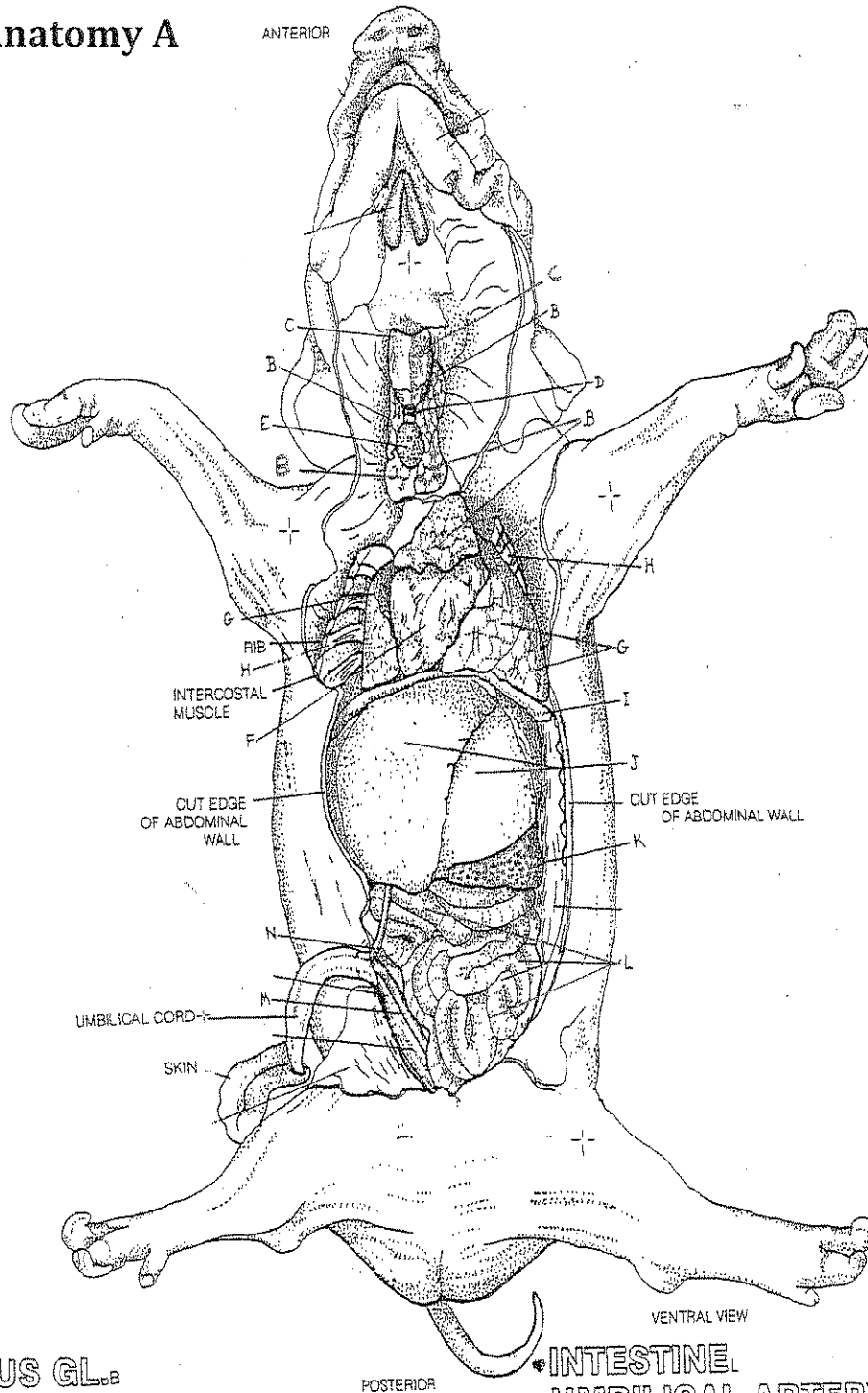


Pig Anatomy Coloring Packet

Day 2 Coloring: Color-code each of the fetal pig anatomy structures and the term on the list the SAME color.

Thoracic Anatomy A



- THYMUS GL._B
- LARYNX_C
- TRACHEA_D
- THYROID GL._E
- HEART_F
- LUNGS_G

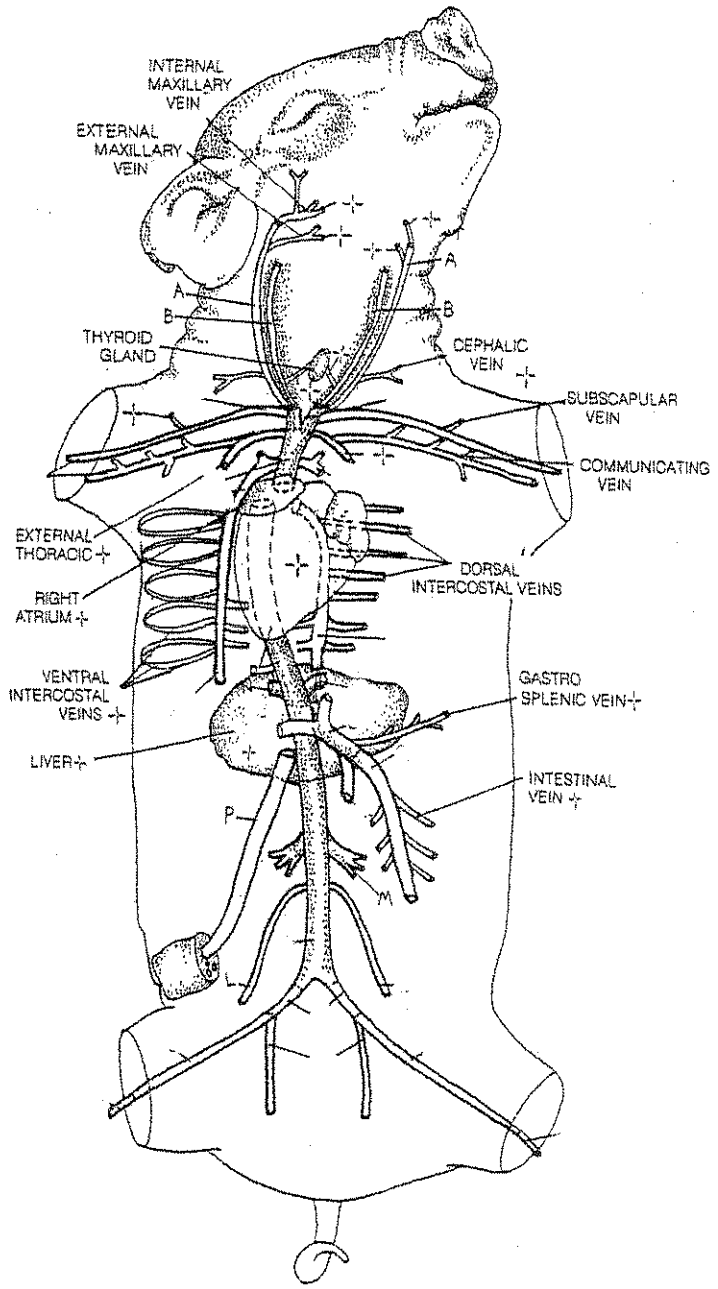
- DIAPHRAGM_H
- LIVER_I
- SPLEEN_J

- INTESTINE_K
- UMBILICAL ARTERY_L
- UMBILICAL VEIN_M

Day 2 Coloring: Color-code each of the fetal pig anatomy structures and the term on the list the SAME color.

Thoracic Anatomy B

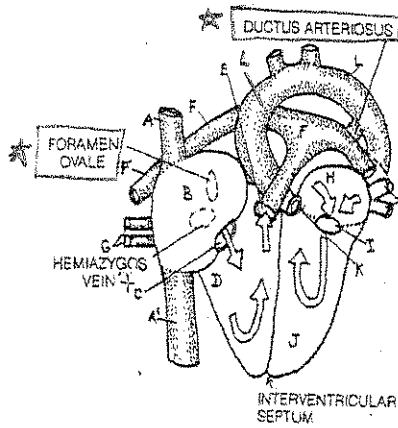
- * EXTERNAL JUGULAR V._{o.A}
- * INTERNAL JUGULAR V._{o.B}



- * UMBILICAL V._{o.P}

Day 3 Coloring: Color-code each of the fetal pig anatomy structures and the term on the list the SAME color.

Circulatory System



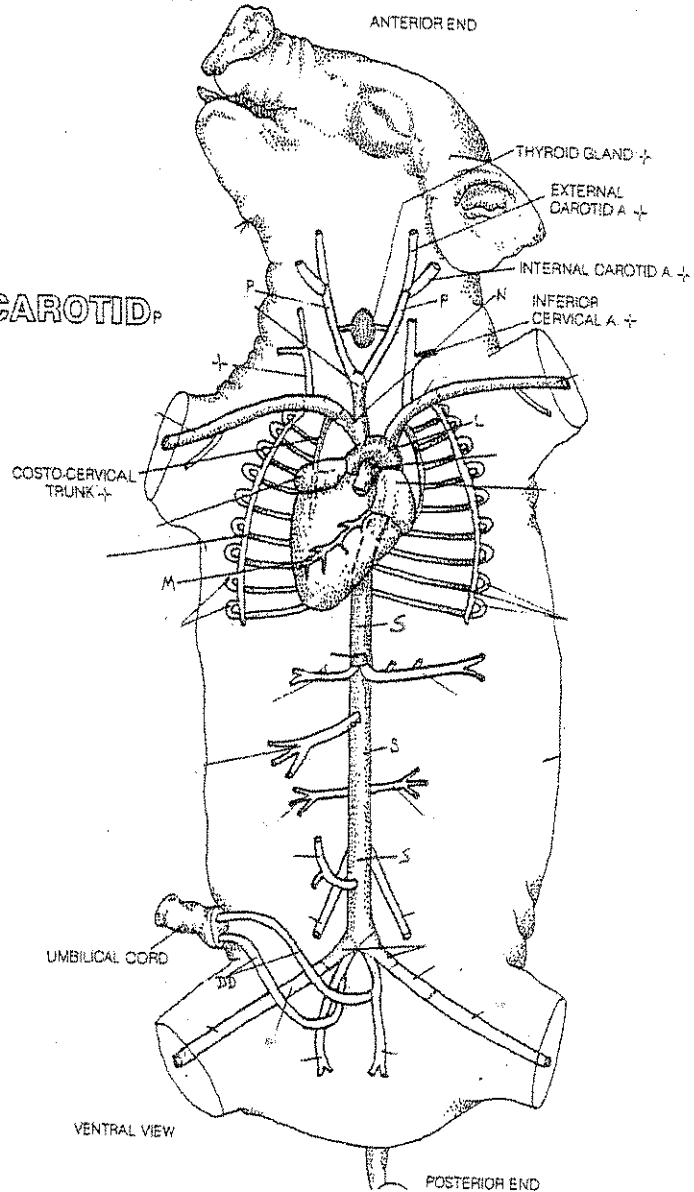
- L. ATRIUM/AURICLE,
- BICUSPID VALVE,
- L. VENTRICLE,
- AORTIC ARCH,
- R. ATRIUM/AURICLE,
- TRICUSPID VALVE,
- R. VENTRICLE,
- PUL. TRUNK/ART.,
- PULMONARY VEINS.

- MAJOR ARTERIES
- AORTIC ARCH,
 - CORONARY,

- L./R. COMMON CAROTID,

- DORSAL AORTA,

- Umbilical arteries DD



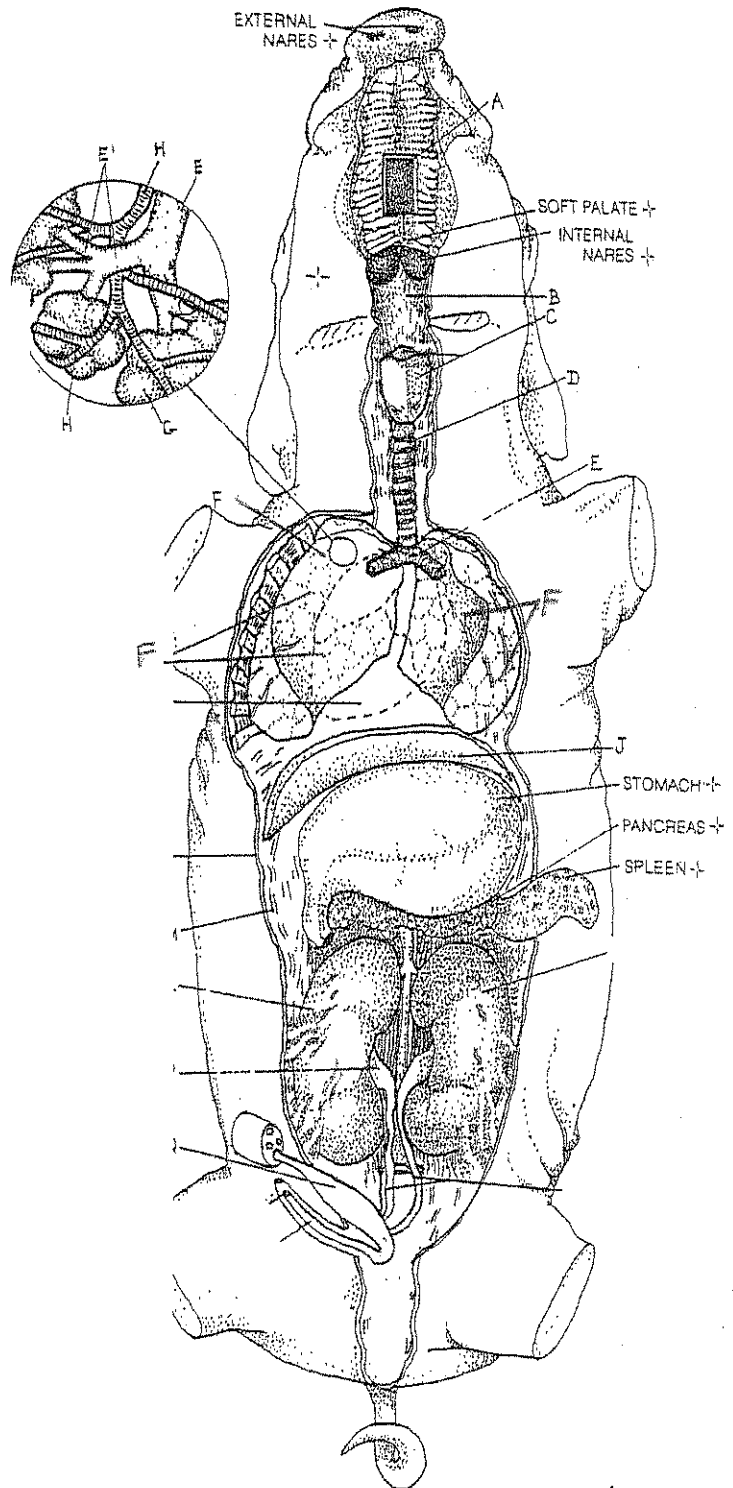
Day 3 Coloring: Color-code each of the fetal pig anatomy structures and the term on the list the SAME color.

Respiratory System

- NASAL CAVITY_A
- PHARYNX_B
- LARYNX_C
- TRACHEA_D
- BRONCHI/BRONCHIOLE_E
- LUNGS_F

* Color both sides

- DIAPHRAGM_J



Day 4 Coloring: Color-code each of the fetal pig anatomy structures and the term on the list the SAME color.

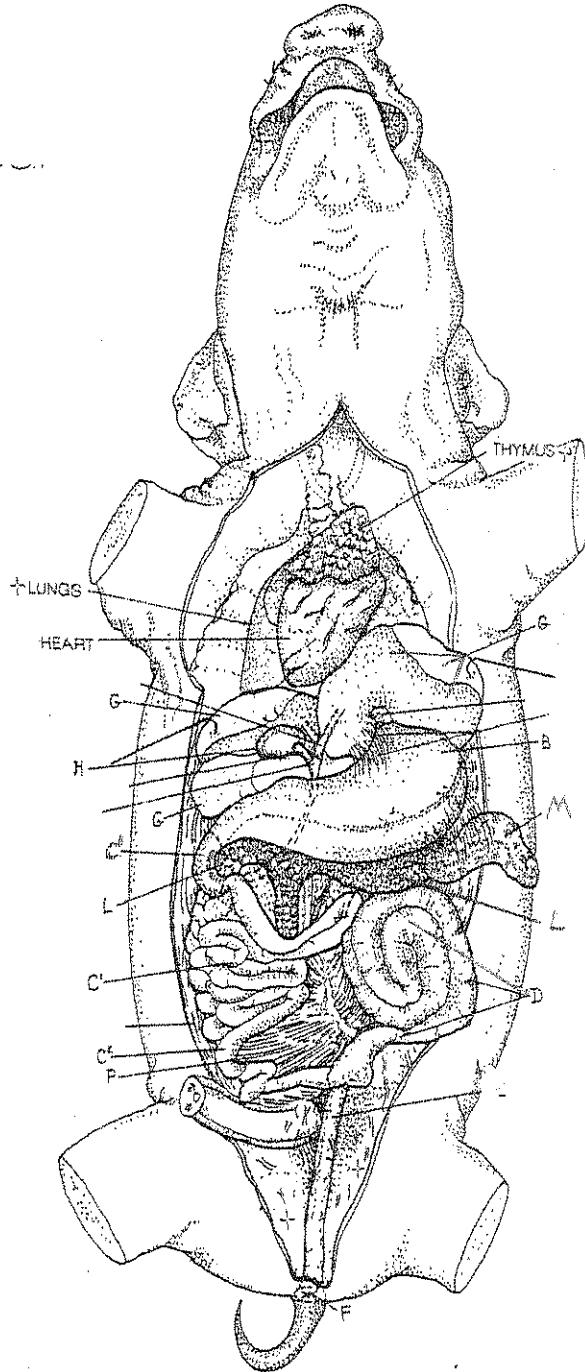
Digestive System

- STOMACH_b
- SMALL INTESTINE_{e, f, g}

- LARGE INTESTINE_b
- RECTUM_e
- ANUS_f

GLANDS

- LIVER_c - Color all lobes
- GALLBLADDER_d
- PANCREAS_h
- SPLEEN_m
- MESENTERY_f



Day 5 Coloring: Color-code each of the fetal pig anatomy structures and the term on the list the SAME color.

Urinary System

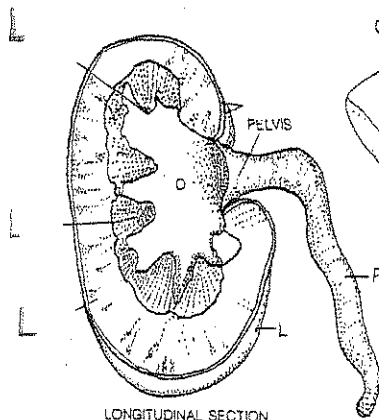
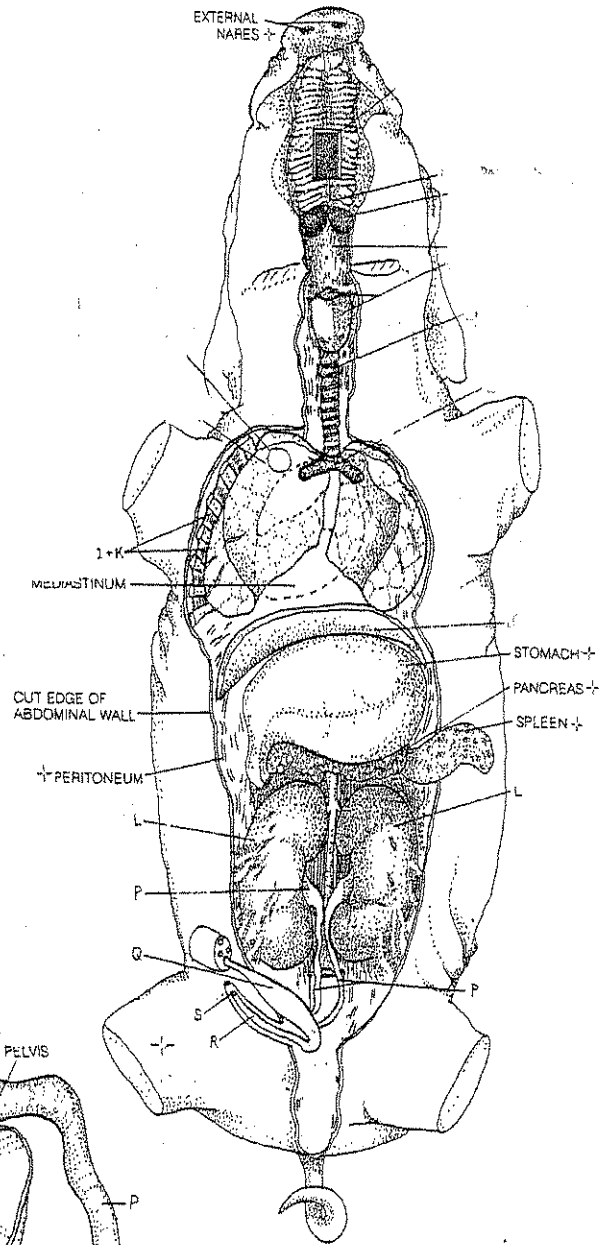
◆ KIDNEY.

◆ URETER.

◆ URINARY BLADDER.

◆ URETHRA.

◆ UROGENITAL OPENING.



Day 5 Coloring: Color-code each of the fetal pig anatomy structures and the term on the list the SAME color.

Reproductive System

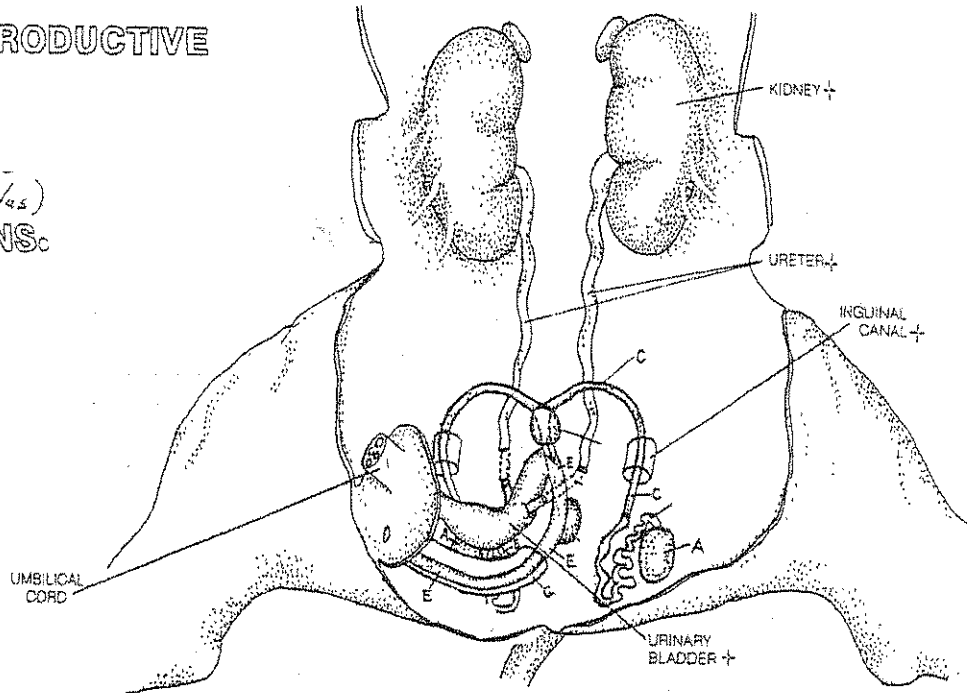
MALE REPRODUCTIVE SYSTEM.

• TESTIS_A

• (Vas)
DEFERENS_C

• URETHRA_E

• PENIS_G



FEMALE REPRODUCTIVE SYSTEM.

- OVARY_H
- UTERINE TUBE Oviduct_I
- UTERINE HORN_J
- UTERUS_K

• UROGENITAL SINUS_N

